

Who Am I?

As a Change and Engagement Lead in Digital Transformation, I'm actively involved in shaping our AI initiatives. Beyond my core role, I serve as an AI Advocate and leverage my skills as a web app developer to build practical tools, like the AI mentor I recently created by integrating various AI technologies.

I thrive on embracing change, understanding it's a constant force, and I believe the most effective place to be is at the forefront, guiding the way.



Kieron Welch

Agenda

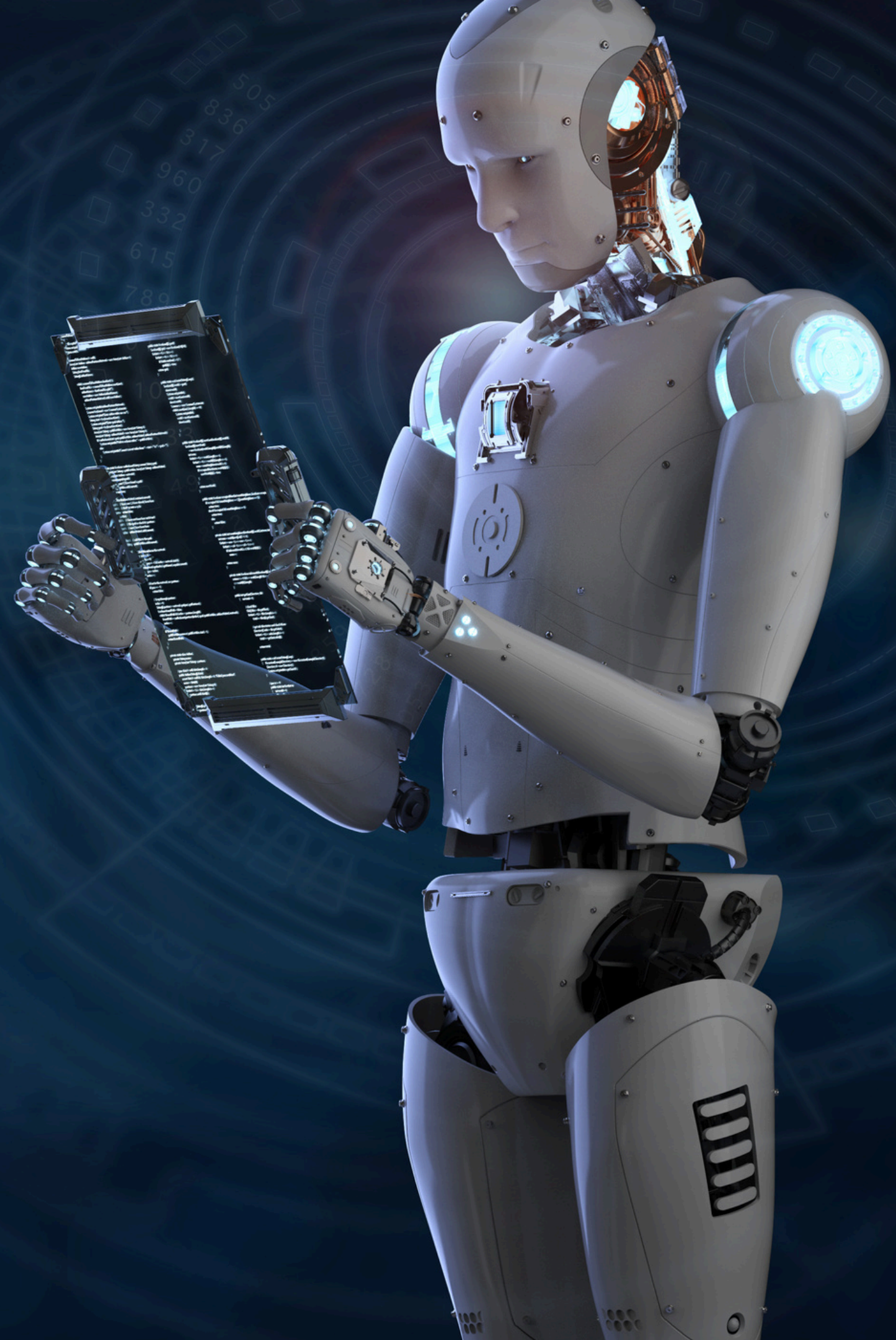
Introduction

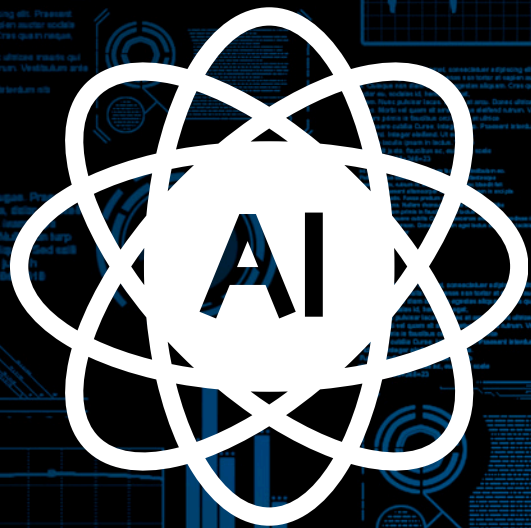
The Core Premise

The 5 Essentials Overview

Essentials 1 thru 5

Questions





Shaping Tomorrow: Mastering the 5 Essentials for Thriving in the AI Era

Kieron Welch

Introduction - The AI Imperative

The AI Imperative: More Than Just a Trend, It's Our Next Evolution

AI isn't just coming; it's here, and its pace of adoption is accelerating. This isn't about if we interact with AI, but how



AI



- Brief overview of AI's current impact (e.g., personalisation, automation, data analysis).
- The "fear vs. opportunity" paradox: common anxieties (job displacement) where there is change there is opportunity.
- **Crucial point:** Those who embrace AI actively will have the power to influence its development and integration, rather than simply being subject to it.

The Core Premise - Why Embrace, Not Just Adopt?

There's a fundamental difference between passively adopting AI tools and actively embracing the AI paradigm. The latter gives you agency.



EMBRACE



ADOPT

- **Passive Adoption:** Using off-the-shelf AI tools without understanding their underlying mechanisms or potential for customisation. (Analogy: Using a hammer without knowing how to build)
- **Active Embrace:** Understanding AI's capabilities, limitations, and ethical implications. This allows for strategic integration, innovation, and even co-creation of AI solutions.
- **The Power of Influence:** By being deeply involved, you contribute to best practices, ethical guidelines, and the direction of AI's evolution in your industry and beyond.

The 5 Essentials - Overview

These five areas are critical for individuals and businesses to not just survive but thrive and actively shape the AI-powered future.

- AI Literacy & Critical Thinking
- Data Fluency & Ethical Stewardship
- Problem-Solving & Creativity (Enhanced by AI)
- Collaboration & Communication with AI
- Adaptability & Lifelong Learning

Essential 1: AI Literacy & Critical Thinking

What it means: Understanding the what, how, and why of AI. Not necessarily coding, but conceptual understanding. Knowing how to critically evaluate AI outputs.

Why it's crucial for shaping AI:

- Informed Decision-Making: You can choose the right AI tools and strategies for your needs.
- Identifying Bias & Limitations: You're not just accepting AI output; you're questioning it, leading to better, more ethical AI deployments.
- Effective Prompt Engineering: The ability to communicate precisely with AI models (e.g., GenAI) is a direct way to influence its output.

Actionable Advice:

- Read widely (articles, books, reputable news).
- Experiment with various AI tools (ChatGPT, Midjourney, Copilot, etc.).
- Attend webinars/courses on AI fundamentals.

Essential 2: Data Fluency & Ethical Stewardship

What it means: Understanding how data powers AI, how to gather, interpret, and manage it responsibly. Crucially, recognising and mitigating ethical risks.

Why it's crucial for shaping AI:

- Quality In, Quality Out: You influence the data that trains AI, directly impacting its performance and fairness.
- Ethical AI Design: By prioritising ethical considerations (privacy, bias, transparency), you steer AI development towards beneficial outcomes.
- Compliance & Trust: Building and maintaining trust in AI systems is paramount for adoption and societal acceptance.

Actionable Advice:

- Learn data basics (how data is collected, stored, analysed).
- Familiarise yourself with data privacy regulations (GDPR, etc.).
- Engage in discussions about AI ethics.

Essential 3: Problem-Solving & Creativity (Enhanced by AI)

What it means: AI automates tasks, freeing up human capacity for higher-level strategic thinking, complex problem-solving, and novel idea generation.

Why it's crucial for shaping AI:

- Identifying New AI Applications: You see where AI can truly add value, not just where it can replace.
- Human-Centric Innovation: You design AI solutions that genuinely solve human problems and unlock new creative possibilities.
- Co-Creation: You become an AI "pilot," leveraging its capabilities as a tool to amplify your own ingenuity.

Actionable Advice:

- Practice design thinking and user-centric approaches.
- Use AI tools as creative partners (brainstorming, drafting, idea generation).
- Focus on defining complex problems clearly before seeking AI solutions.

Essential 4: Collaboration & Communication with AI

What it means: Developing the skills to effectively interact with, direct, and interpret AI systems. Also, communicating the value and limitations of AI to others.

Why it's crucial for shaping AI:

- Effective Prompt Engineering: Mastering how to "speak" to AI models to get desired results (crucial for GenAI).
- Team Integration: Facilitating smooth collaboration between human teams and AI tools/agents.
- Building Consensus: Explaining AI's benefits and risks to stakeholders, ensuring broader acceptance and effective deployment.

Actionable Advice:

- Practice different prompting techniques with various AI models.
- Develop strong interpersonal communication skills.
- Learn to articulate complex technical concepts simply.

Essential 5: Adaptability & Lifelong Learning

What it means: The AI landscape is rapidly changing. This requires a growth mindset, curiosity, and a commitment to continuous upskilling and reskilling.

Why it's crucial for shaping AI:

- Identifying New AI Applications: You see where AI can truly add value, not just where it can replace.
- Human-Centric Innovation: You design AI solutions that genuinely solve human problems and unlock new creative possibilities.
- Co-Creation: You become an AI "pilot," leveraging its capabilities as a tool to amplify your own ingenuity.

Actionable Advice:

- Practice design thinking and user-centric approaches.
- Use AI tools as creative partners (brainstorming, drafting, idea generation).
- Focus on defining complex problems clearly before seeking AI solutions.
-

The background is a dark blue gradient with a series of concentric, glowing blue circles that create a ripple effect. Scattered throughout the scene are numerous small, bright blue dots. In the upper right quadrant, there is a glowing wireframe sphere composed of interconnected lines and small square nodes. The text "Thank You!" is centered in the middle of the image in a white, bold, sans-serif font.

Thank You!